



FOR LEASE

# PLAZA 975

975 SE SANDY BLVD, PORTLAND, OR, 97214

Close-In Eastside Industrial District office space with on-site dedicated parking and customizable interior upgrades.



**GRID**  
PROPERTY  
MANAGEMENT, LLC

Kiely Kreitzberg

503-406-2706

[Kiely@GridPropertyManagement.com](mailto:Kiely@GridPropertyManagement.com)



# PLAZA NINE SEVENTY FIVE

975 SE SANDY BLVD, PORTLAND, OR, 97214

Kiely@GridPropertyManagement.com

503-406-2706

PLAZA975.COM

## OFFICE SPACE

Suite 110 - Leased

Suite 140 - 638 RSF @\$39.00 rsf/year

Suite 204 - 329 RSF @\$39.00 rsf/year

## AMENITIES

Fully Renovated

New Roof

Coded Building Entry

Conference Room

New Windows

3.0 Parking Spots per

Air Conditioning

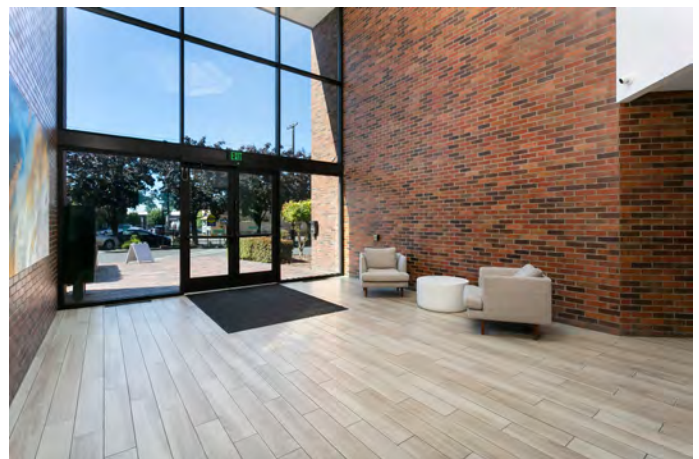
Central Heating

1,000 RSF

Elevator Served

LED Lighting

Close to Shops



**WALK SCORE : 95**

**TRANSIT SCORE: 80**

# PLAZA NINE SEVENTY FIVE

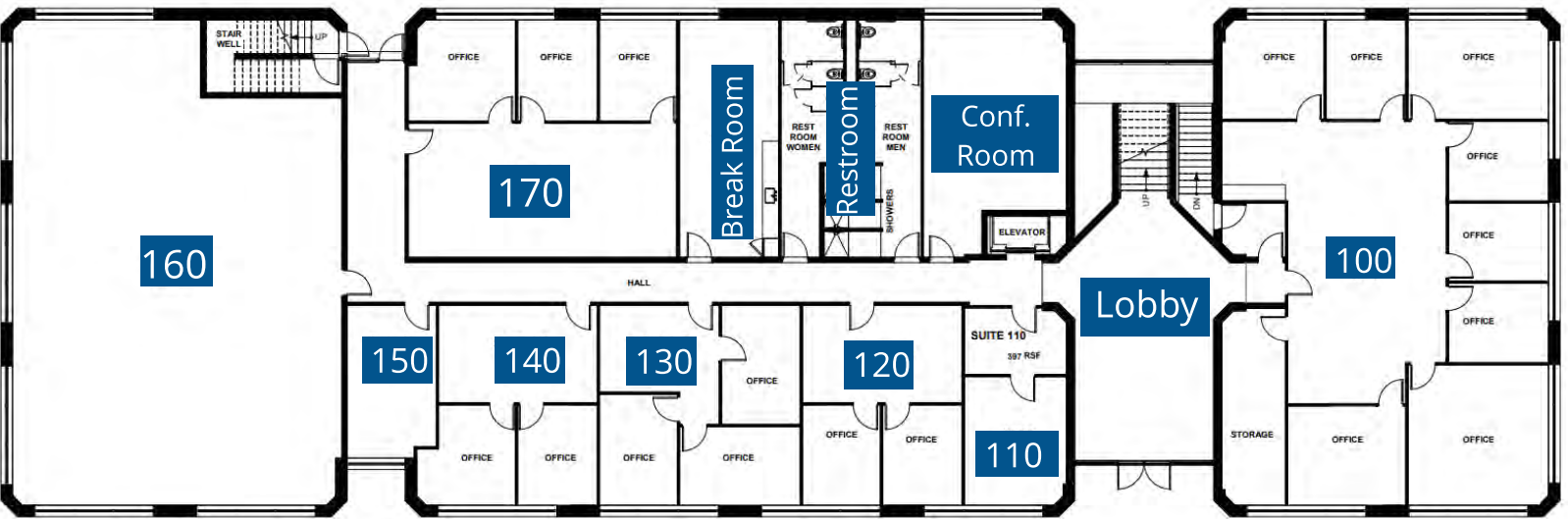
975 SE SANDY BLVD, PORTLAND, OR, 97214

Kiely@GridPropertyManagement.com

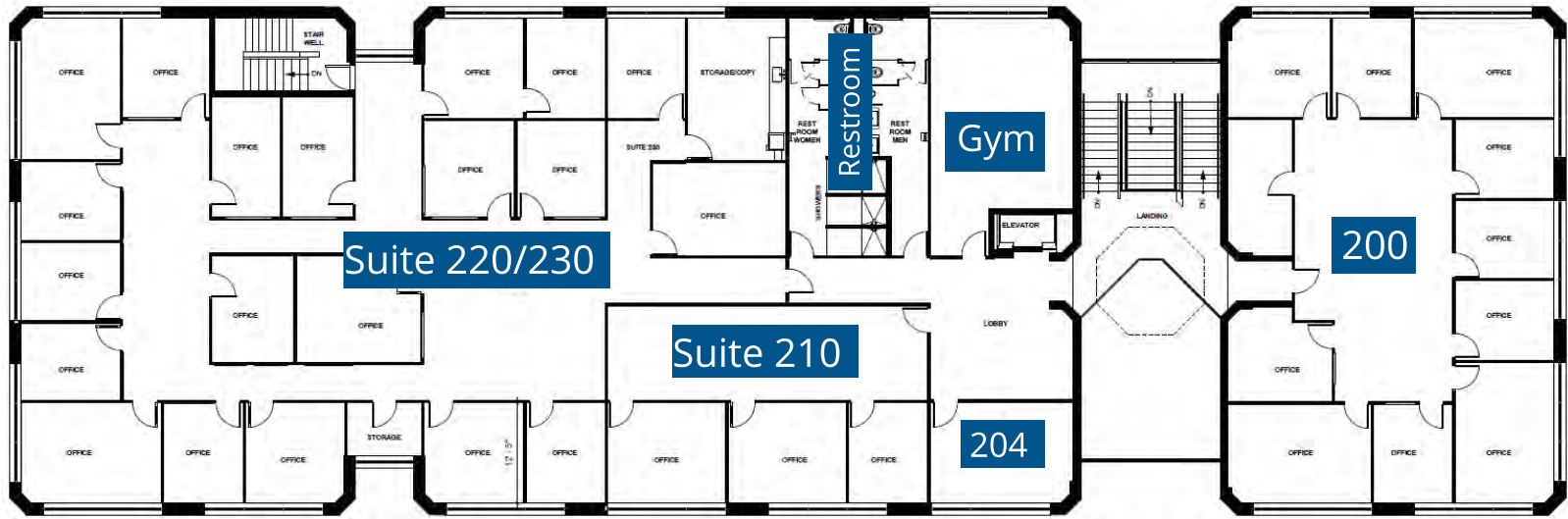
503-406-2706

PLAZA975.COM

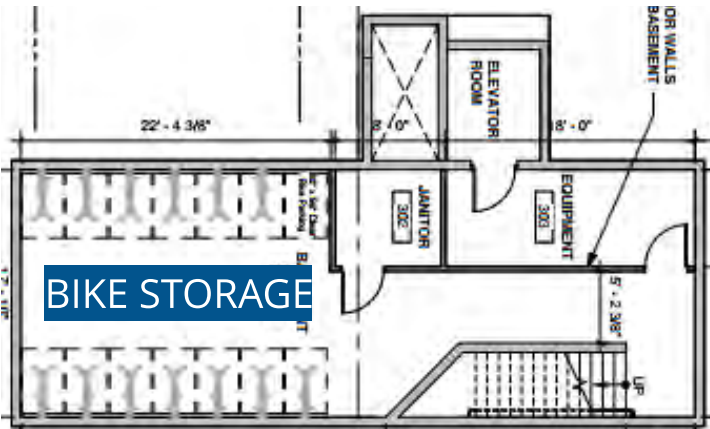
## FIRST FLOOR



## SECOND FLOOR



## BASEMENT



# PLAZA NINE SEVENTY FIVE

975 SE SANDY BLVD, PORTLAND, OR, 97214

Kiely@GridPropertyManagement.com

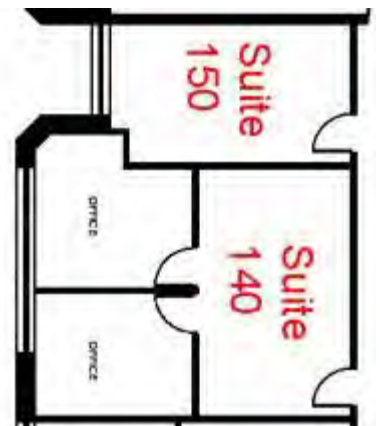
503-406-2706

PLAZA975.COM

## SUITE 140

The first-year base rent rate is \$25.00 per year per rentable square foot (\$1,329.17 per month) plus \$14.00 per year per square foot pro-rata allocation of triple net (NNN) costs (\$744.33 per month), resulting in all-in lease costs of \$2,073.50 per month for year 1 with 5% annual increases to base rent for each year thereafter. There are no additional costs to the Tenant under this lease other than Tenant-selected internet and phone service.

Parking is available up to two cars for an additional \$125.00 per month.





# PLAZA NINE SEVENTY FIVE

975 SE SANDY BLVD, PORTLAND, OR, 97214

Kiely@GridPropertyManagement.com

503-406-2706

PLAZA975.COM

## SUITE 204

The first-year base rent rate is \$25.00 per year per rentable square foot (\$685.42 per month) plus \$14.00 per year per square foot pro-rata allocation of triple net (NNN) costs (\$383.83 per month), resulting in all-in lease costs of \$1,069.25 per month for year 1 with 5% annual increases to base rent for each year thereafter. There are no additional costs to the Tenant under this lease other than Tenant-selected internet and phone service.

Parking is available up to two cars for an additional \$125.00 per month.





# PLAZA NINE SEVENTY FIVE

975 SE SANDY BLVD, PORTLAND, OR, 97214

Kiely@GridPropertyManagement.com

503-406-2706

PLAZA975.COM

## WORKOUT ROOM





# PLAZA NINE SEVENTY FIVE

975 SE SANDY BLVD, PORTLAND, OR, 97214

Kiely@GridPropertyManagement.com

503-406-2706

PLAZA975.COM

## CONFERENCE ROOM



## RESTROOM AND SHOWER



# PLAZA NINE SEVENTY FIVE

975 SE SANDY BLVD, PORTLAND, OR, 97214

Kiely@GridPropertyManagement.com

503-406-2706

PLAZA975.COM

## Contact Us!

Kiely@GridPropertyManagement.com

503-406-2706

Plaza975.com



Grid Property Management is a Portland-based property management firm that specializes in the management of commercial, and industrial property.